



BENNETT VALLEY VOICE

VOLUME 22 NUMBER THREE

INSIDE THIS ISSUE
Millennial Calendar
Memo from the President
Fire District News
Matanzas Creek Watershed
Lyme Disease & Your Pet
Forum 2000 Update

AUGUST, 1999

A MEMO FROM THE PRESIDENT

Most of you are probably aware of the recent Sonoma County Grand Jury report which recommended that the Bennett Valley Area Plan be eliminated. This was as a result of complaints made about the Bennett Valley Design Review Board over the past two years.

The Board of Directors of the Bennett Valley Homeowners' Association was concerned about this matter and held a joint meeting with Supervisor Mike Cale and the Bennett Valley Design Review Board. After discussing the matter, it was concluded that the problem appears to be *one of administration and lack of processing of information rather than one of plan content.*

Thus, it was decided to streamline the process and make it a more applicant friendly procedure. The Design Review Board is also working on other changes that will help clarify the process.

(continued on next page)

UPPER MATANZAS CREEK WATERSHED GROUP

The Bennett Valley 2000 meeting held on March 6, 1999, dealt with Land Use issues. Bob Tancreto, District Engineer with the North Coast Water Quality Control Board spoke at the meeting and mentioned that Bennett Valley residents might want to become involved in a watershed group. As a result of his recommendation, the BVHA is communicating with the Sotoyome Resource Conservation District about forming a watershed group for Upper Matanzas Creek in the unincorporated area of Bennett Valley.

Being non-regulatory, the Sotoyome Resource Conservation District (SRCD) is the only grassroots conservation delivery system that works cooperatively with landowners and agencies such as Fish and Game, Sonoma County Water Agency, North Coast Water Quality Control Board, and the Circuit Riders. *SRCD can help the community in the process of creating a healthy watershed through community involvement.*

Although the SRCD may not have the available time to help immediately, they do have information and kits to train volunteers to monitor water in the Upper Matanzas Creek. This would offer the community an opportunity to learn about their watershed while, at the same time, creating a valuable scientific record.

(continued on next page)

(continued from page one)

The next area I would like to address is that of the Bennett Valley Fire Protection District. As you know, the heart of this department is made up of volunteers. Men and women who give freely of their time week after week, and often not even a "thank you" for a job well done. Though we may not know their names, we depend on them in emergency situations. They are real heroes when we need them!

Bennett Valley Community Day will give us a chance to say "thank you" and will be a perfect opportunity to give a donation to keep our fire department the first class organization that it is. If you can't attend, how about a donation for these local heroes.

Another matter I would like to bring to your attention is the sad plight of the creek running along side Sonoma Mountain Road. Our

Clean-Up Day brought up almost *three dozen* used tires from the creek, and that was hardly a dent! Other items that we could not remove were appliances, (washers and dryers) disposable diapers, and a variety of other items. Please, if you see someone disposing of anything in the creek, get a license plate number and report it to the local authorities.

Finally, it is time for Board elections, and we would like *to ask our members to remember to vote*. Candidate statements are printed elsewhere in the newsletter, and a ballot is enclosed with your copy of the VOICE. (If you would like to vote and are not a member, it is never too late to join!)

Bill Sullivan

(continued from page one)

At some point in time, SRCD should be able to assist and train those interested in doing water quality sampling; measuring creek channels and riparian corridor; evaluating erosion on roads and slopes; measuring water flow, siltation, and rainfall; and creating an atlas of the watershed by using maps, surveys, and the internet. The SRCD program also focuses on restoration actions such as reducing erosion; repairing roads to reduce sedimentation into creeks; revegetating streams; planting river banks; and improving water quality.

SRCD should also be able to provide information to the Watershed Group about the process of obtaining funds; implementing necessary restoration actions; and creating a record of long term environmental improvements.

Anyone interested in participating in such a group for the Upper Matanzas Creek, please contact Marilee Jensen, or any BVHA Board member. Kerry Williams, a representative from the Sotoyome Resource Conservation District, will speak at the 2nd annual Bennett Valley 2000 meeting to be held this Fall.



**BENNETT VALLEY VOLUNTEER FIREFIGHTER'S
ASSOCIATION
WILL BE HOSTING
BENNETT VALLEY COMMUNITY DAY.
SUNDAY, AUGUST 29TH AT HAARSTAD
VINEYARD (END OF JAMISON ROAD.)
12:00-5:00 PM**

GRANGE ROAD PEDESTRIAN/BIKE SAFETY TRAIL

At the Bennett Valley 2000 Transportation/Circulation meeting held on February 6, 1999, one of the items which was identified as needing further exploration was a place in Bennett Valley for a *safe pedestrian /bicycle trail that would not interfere with the rural character of the Valley*. The committee, led by Dean Linscott and Anita Engberg, looked into this and identified a part of Grange Road where such a trail was feasible.

This section of Grange Road runs from the Bridge along the Kendall-Jackson property for approximately 6/10ths of a mile almost up to the main grape planting area. The proposed trail would be about five feet wide, and would run between the ditch on the road and the property fence. It would *NOT* be directly connected to Grange Road. The trail would meander where necessary to avoid removal of *ANY* oak trees.

Before proceeding any further with these plans, *we are requesting input from Bennett Valley residents as to whether or not they are interested in having such a trail in the first place.*

Those wishing to provide input should mail their comments to Dean Linscott at 4877 Grange Road, Santa Rosa, CA 95404. Marilee Jensen can also be telephoned or faxed at 576-0405, or reached by e-mail at <marileej@sprintmail.com>. We are requesting that you send your comments to us within two weeks.

We are also asking for input on the type of surface to be used. The choice is between asphalt (longer lasting but fairly expensive) or blue shale (a type of crushed rock which is fairly durable and much less expensive).



BVHA DIRECTORS

Bill Sullivan, President (528-6804)
Ray Longman, Vice-president (545-2054)
Nancy Dell'Ergo, Treasurer (525-1202)
Leanne Mesches, Corres. Sec. (545-8684)
Eve Boling, Recording Secretary (573-8614)
Marilyn Stocks (528-2458)
Kent Chilcott
Jim Katon (528-9487)
Marilee Jensen (576-0405)

COMMUNITY CALENDAR

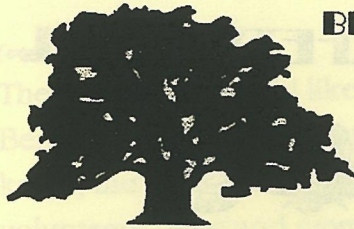
The Bennett Valley Homeowners' Association meets the 3rd Wednesday of each month at 7:30PM at the Firehouse.

The Design Review Committee meets the 2nd & 4th Wednesday of each month at 7:00 PM at the Firehouse. Items need to be on the agenda. Contact Chairperson Tamara Boulton at 584-8483.

The Bennett Valley Fire Protection District Board meets the 2nd Tuesday of each month at 7:00 PM at the Firehouse.

The Board of Supervisors meets every Tuesday except on weeks when there is a holiday. Information can be found on their website at (www.sonoma/county.org).

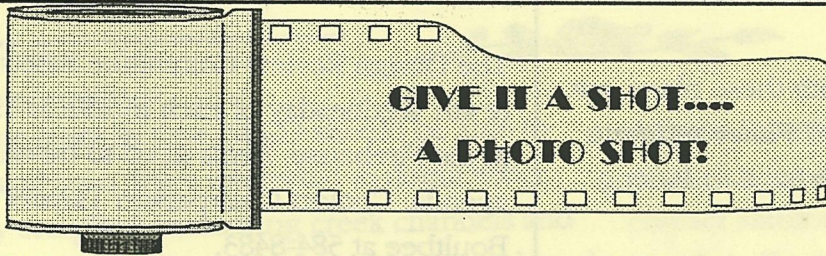




**BENNETT VALLEY
VOICE**

Bennett Valley
Homeowners' Association
PO Box 2666
Santa Rosa, CA 95405

NORM & EVE BOLING
2769 ROLLO RD.
SANTA ROSA CA 95404
99



The BVHA is publishing a millennial calendar composed of original photographs of Bennett Valley submitted by residents. We're calling for views of Bennett Valley that portray its special qualities throughout the seasons, and are inviting residents to share their favorite Bennett Valley photos.

Those photos not included in the calendar will receive recognition in an exhibition at the Grange Hall at our next Bennett Valley 2000 meeting to be held in November. Please send your photos (prints, not slides) to Sally Weare at 2663 Bennett Ridge Rd., Santa Rosa, CA 95404. The Open Space Study Committee will be making final selections.

DEADLINE FOR SUBMISSION: SEPTEMBER 10, 1999.

RESERVE YOUR CALENDAR NOW!

**PRE-PAYMENT WILL INSURE THAT YOU GET YOUR CALENDAR(S), A LIMITED EDITION,
FOR THE YEAR 2000. THE COST: \$15.00 EACH.**

MAKE CHECKS PAYABLE TO BVHA, PO BOX 2666, SANTA ROSA, CA 95405

FIRE SAFETY IS YOUR RESPONSIBILITY AND OURS

By Kent Reynolds, Fire Chief

As everyone knows, fire is one of the most powerful forces in nature. While frightening, fire is essential for a healthy ecosystem. It thins forests so that trees have room to grow; it cleanses the earth and replenishes the soil so that new life may be nourished. Without our intervention, fire completes Mother Nature's perfect recycling process.

There is a changing fire environment in California. It's called the urban/wildland interface, the precarious place where civilization meets nature. Does this sound like Bennett Valley? It does to me. As we drive through Bennett Valley at this time of year, it is obvious that we are in an urban/wildland interface; dried grass lands and oak woodlands interspersed with vineyards and houses. It would only take one careless act or a downed power line to start a wildland fire.

No matter how a fire starts, when vegetation and access to properties are not managed, small fires can travel quickly and get out of control. The most important concept the residents of Bennett Valley need to embrace and enforce is defensible space. Anything worth protecting must have defensible space - a safety zone around the property that slows the fire's spread and intensity.

Defensible Space Action Steps:

Clear all flammable vegetation or other combustible materials for a minimum of 30' around the structure. Clear dead leaves and branches to leave widely spaced ornamental shrubbery and trees.

If extremely hazardous conditions exist, such as steep slopes, the defensible space should be at least 100' from the structure or to the property line.

Remove branches within 10' of a chimney or stovepipes. Trim all dead limbs hanging over your house or garage.

Cover chimneys or stovepipe outlets with a spark arresting, nonflammable screen of 1/2" or smaller mesh.

Stock woodpiles at least 30' from buildings, fences, and other combustible materials.

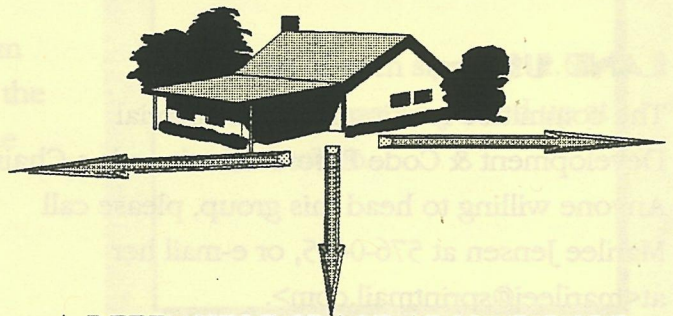
Remove dead vegetation, leaves, needles, and other debris from roofs and gutters.

Roofs in Bennett Valley must have a class C or better fire rating.

Clear all vegetation and flammable materials from under your deck. Enclose underside of elevated decks with fire resistive materials.

Make sure your address is clearly visible for easy identification in an emergency.

The Bennett Valley Fire District is here to help with any questions on fire safety. Please give us a call for a fire safety review of your property.



A DEFENSIBLE SPACE AROUND YOUR HOME!

BENNETT VALLEY 2000 FOLLOW-UP

By Marilee Jensen

The tentative date for the Second Annual Community Forum is Saturday, November 6th. The Forum will be held at the Grange Hall from 8:00 AM until noon. Look for further information in a separate mailing.

TRANSPORTATION/CIRCULATION

Dave Wallace, Sonoma County Traffic Engineer, reports that his office was able to obtain the necessary measurements to allow the CHP to use radar to enforce the posted speed limits on Grange Road and Bennett Valley Road.

John Maitland, Road Maintenance Supervisor for Sonoma County Public Works informed us that the county has completed the chip sealing (oil & gravel on the roads to seal them) on Pressley Rd. from Sonoma Mtn. Road to the Park Entrance; and Sonoma Mtn. Road from Enterprise to Warm Springs Road. The County is also installing a guard rail on Bennett Valley Road on the Pisenti curve.

COMMUNICATION

When the "Guide to Bennett Valley" is completed, it will be distributed to the residents of Bennett Valley. If you are interested in having anything included in this Guide, please notify either Marilyn Stocks (528-2458) or Marilee Jensen (576-0405).

LAND USE

The committee looking into Commercial Development & Code Enforcement needs a Chair. Anyone willing to head this group, please call Marilee Jensen at 576-0405, or e-mail her at <marileej@sprintmail.com>.

COMMUNITY ROOM

The Community Room Study Group is continuing to explore options for such a room in Bennett Valley.

OPEN SPACE/ SCENIC CORRIDORS

The Open Space Committee is working on a millennial *calendar*. More information on the calendar can be found on the back of the VOICE.

We look forward to seeing you at the next Community Forum this Fall!



THANK YOU!

The BVHA would like to thank all of those residents of Bennett Valley who joined our association in 1999.

Your support is what makes us an effective organization!

VOTE CANDIDATE'S NIGHT

The Bennett Valley Fire Protection District will be holding elections this Fall for their Board of Directors.

The BVHA will sponsor a candidate's night at our October 20th meeting. All candidates running for the Fire District Board will be invited to speak.

**ELECTION OF THE BENNETT VALLEY
HOMEOWNERS' ASSOCIATION
BOARD OF DIRECTORS**

**VOTE FOR 3 CANDIDATES; THERE WILL BE NO NOMINATIONS
FROM THE FLOOR. RESULTS WILL BE ANNOUNCED AT THE
OCTOBER MEETING.**

BOBBIE BLAIR: I have lived in Sonoma County for 18 years, and the last 13 in Bennett Valley. I was co-chair of C.O.R.E. (Conserve Our Rural Environment), and worked hard to bring about a reasonable compromise for the rebuilding of the Grange Rd. Bridge. I love the uniqueness of this place and, hopefully, by serving on the BVHA Board, I can do my part to try and keep this area as beautiful as it is while accommodating changes we all know are pushing toward us.

KENT CHILCOTT: I have served on the BVHA Board for the last 1 1/2 years. My hope is that I can continue to be a contributing member to the team of people committed to the preservation of Bennett Valley. My professional background is in planning and architecture which, by definition, have a pro-development bias. My personal background is rooted in the notion of leaving things better than I find them. I hope that these beliefs can continue to benefit the Bennett Valley Homeowners' Association. Thank you for your consideration.

JIM KATON: I have lived on Enterprise Rd. since 1978, and in Bennett Valley since 1975. I worked in wineries for 11 years, and since 1978 have been a vineyards owner and manager. I have served one term on the BVHA Board. Maintaining the quality of life in the Valley is important to me; and I would like to continue to do my share to contribute to the Bennett Valley community.



Please mail the enclosed ballot.

**ADDRESS
IDENTIFICATION
NEEDED**

During emergencies, seconds count. Post your address at the beginning of your driveway and, if there are other residencies on the same access, you may need an additional sign at your house.

Good visible addressing is important not only for fire access, but for ambulances, sheriff's officers, delivery companies, postal service, etc.

The Bennett Valley Fire District Explorer Post #78 has reflective signs available for purchase. These signs meet the current Sonoma County Fire Safety Ordinance. The Post is providing this valuable public service to residents of Bennett Valley with the hope of reducing response times, and saving lives and property.

The cost of each sign is \$12.50; order forms can be picked up at the fire station.

HEALTH CARE ISSUES FOR BENNETT VALLEY PETS LYME DISEASE

By Dr. Avra Tracht & Dr. Deborah Hodesson

Once again we want to thank the Homeowners' Association for allowing us the space to keep you informed about issues that relate to your pet's health care. Fall is upon us and so are the ticks. Unfortunately, the ticks in Annadale Park and surrounding areas are carriers of Lyme Disease.

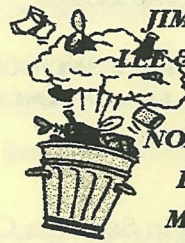
Lyme Disease is caused by the bacteria-like spirochete *Borrelia Burgdorferi*. This spirochete needs ticks to survive. It does not reside in water or soil. Due to the abundance of wildlife reservoirs and ticks, Lyme Disease is a threat to your pets. It is most commonly found in dogs, but can also infect cats. An interesting note is that ticks that feed on lizards do not carry Lyme's Disease.

The only way to become infected with the Lyme agent is through the bite of an infected tick. It requires the tick to be attached and taking a blood meal for over 24 hours. The immature and very small stages of the tick rarely transmit the disease. It is the adults that are the culprits.

Understanding the tick life cycle may help in preventing the disease. Females lay over 2,000 eggs in the spring; the larvae hatch and feed on mice. The next spring the larvae molt into nymphs and again feed on mice, and sometimes other hosts. In the fall, the nymphs molt to adults. Adult ticks mate on the host; the males remain on the host and die. The females engorge for 5 to 7 days and then drop off for the winter. In the spring they lay their eggs.

The disease will begin to produce signs in animals two to five months after exposure. The skin rash common in people is rare in dogs. The most typical

SPRING CLEAN-UP A BIG THANK YOU TO THE FOLLOWING



JIM & JANET ALFIERI
LEE & TERRY BABINEAUX
HELEN BATES
NORM & EVE BOLING
KENT CHILCOIT
MICHAEL CRONIN
NANCY DELL'ERGO
DAN & CAROLE FELCIANO
THE GROVER FAMILY
JIM KATON
GARY & NANCY MCLERRAN
LOLLY MESCHES
DAVE & SANDY SANDINE
BOB & SHARON SORANI
BILL SULLIVAN



symptoms in the dog are: arthritis, fever, swollen joints, loss of appetite, lethargy, and lameness. Luckily, central nervous system involvement is not common in dogs and cats, although it can occur. The above signs can come and go, thus, the disease can go undetected for long periods of time.

To find out if your pet has Lyme Disease, a simple blood test can be run. Treatment is long term antibiotics. Of course, the best defense is preventative measures. To keep exposure down without confining your animals to the great indoors all fall, we recommend Frontline, a topical monthly flea and tick control; and checking you pet's coat daily. Remember, it takes 24 hours of attachment to transmit the spirochete. There also is a vaccine available for dogs. We hope this information is useful, and will help you

protect your pets!

